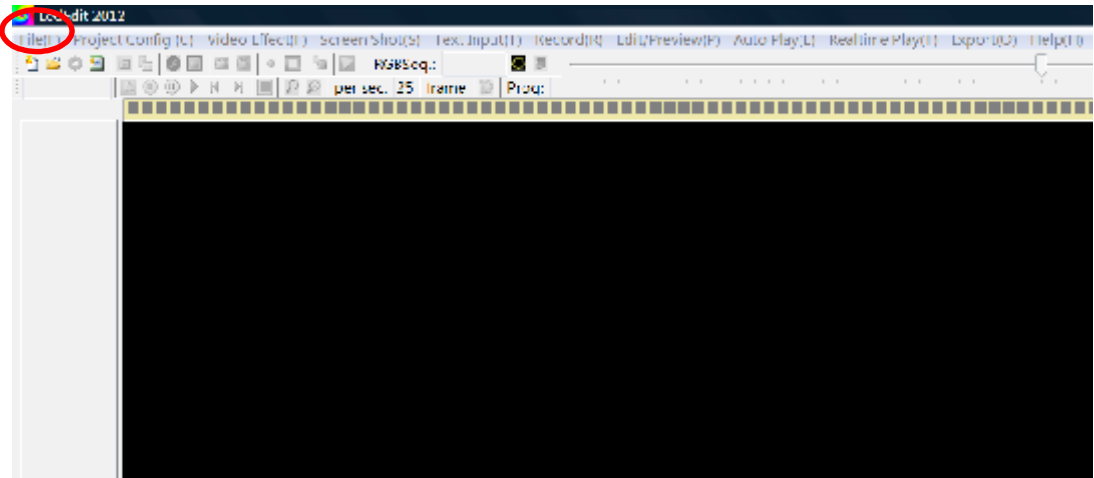


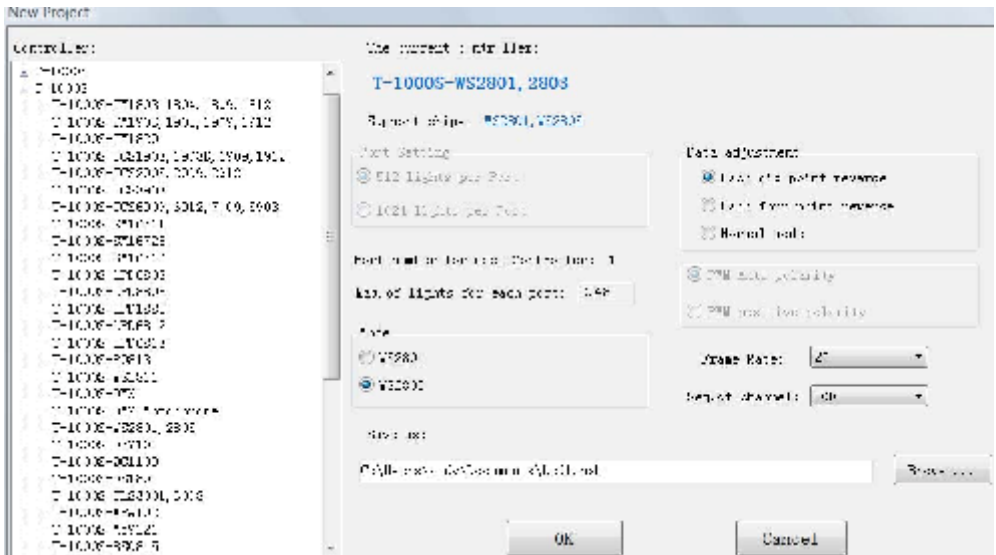
Ledit 2012 software specification

1. Create a new project. (file---New Project)

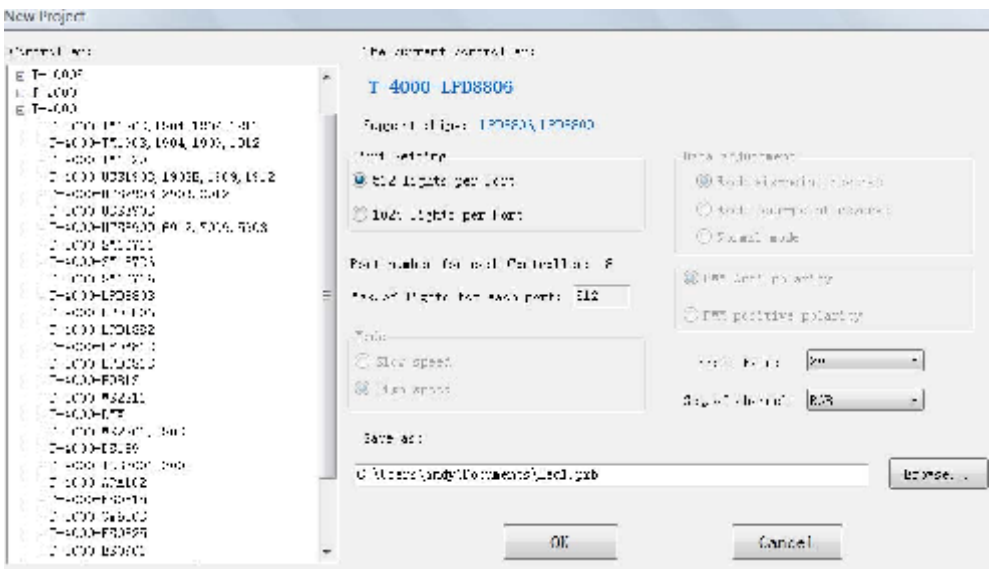


2. Choose the controller model and chip type.

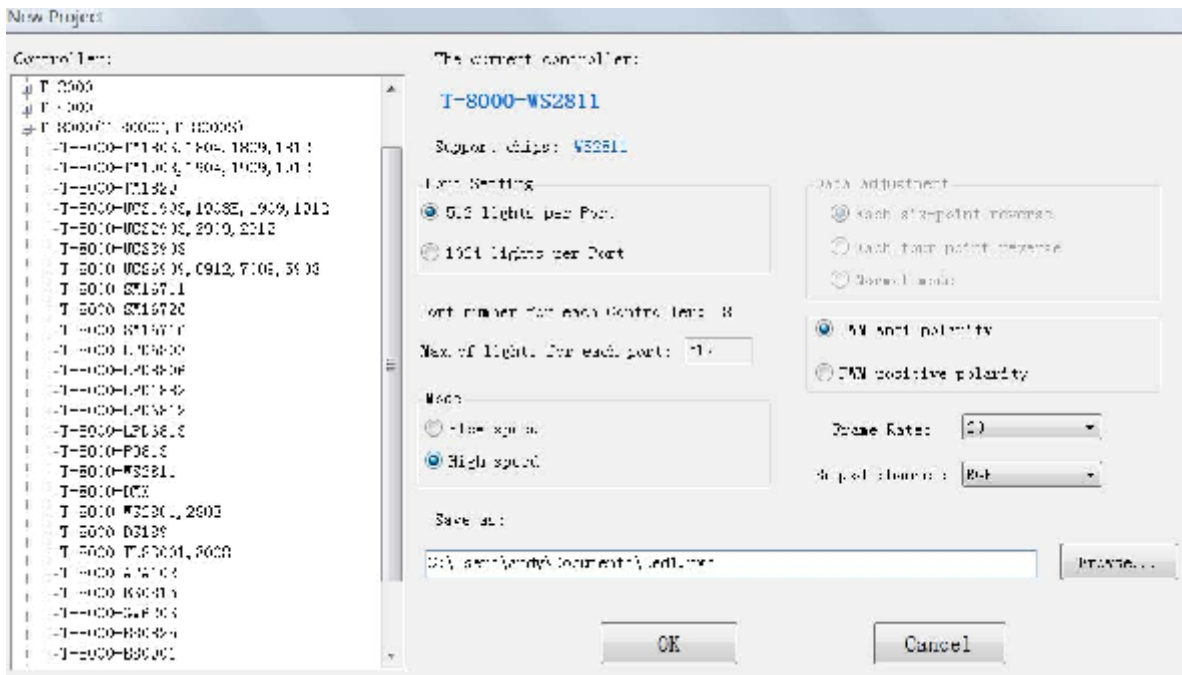
Note: GECOSD1P-2048 controller, Please choose T-1000S and choose the relative chip type



Note: GECOSD4P-4096 controller, Please choose T-4000 and choose the relative chip type

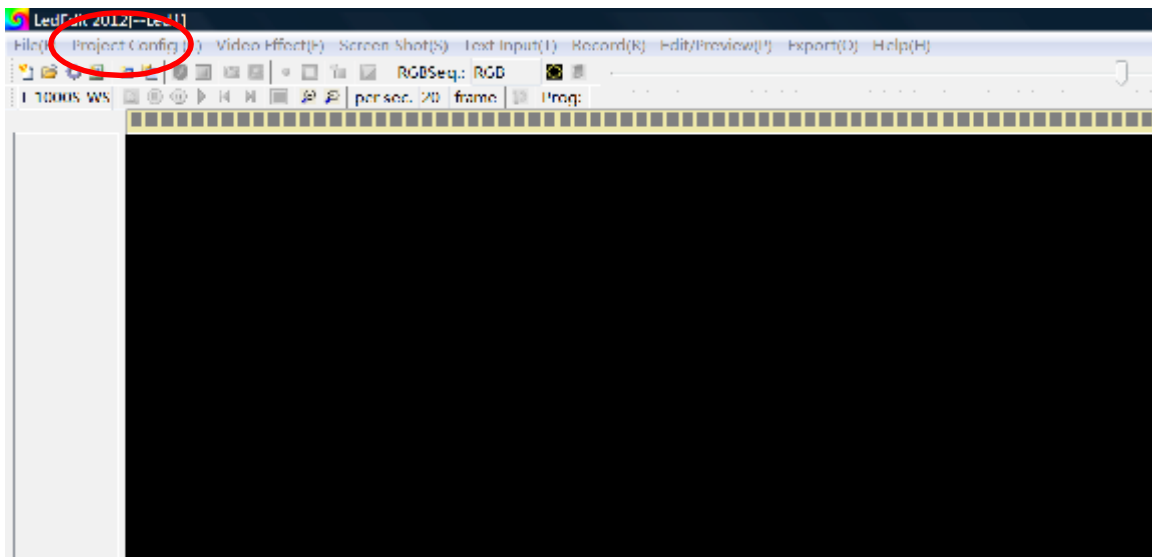


Note: GECOSD8P-8192 controller, Please choose T-8000 and choose the relative chip type

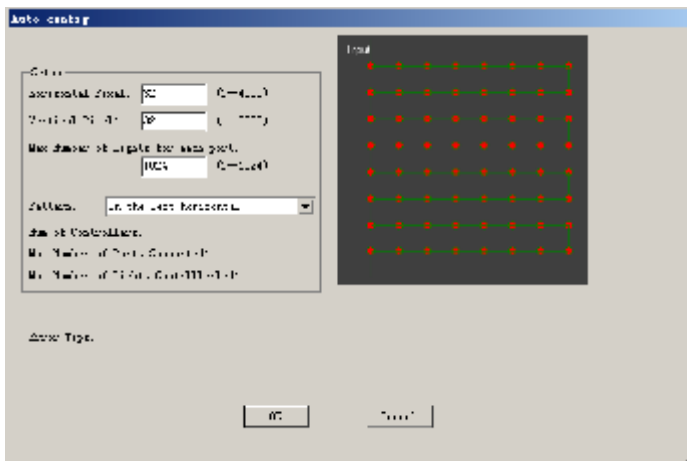


2. Project config and Layout the LED pixels.

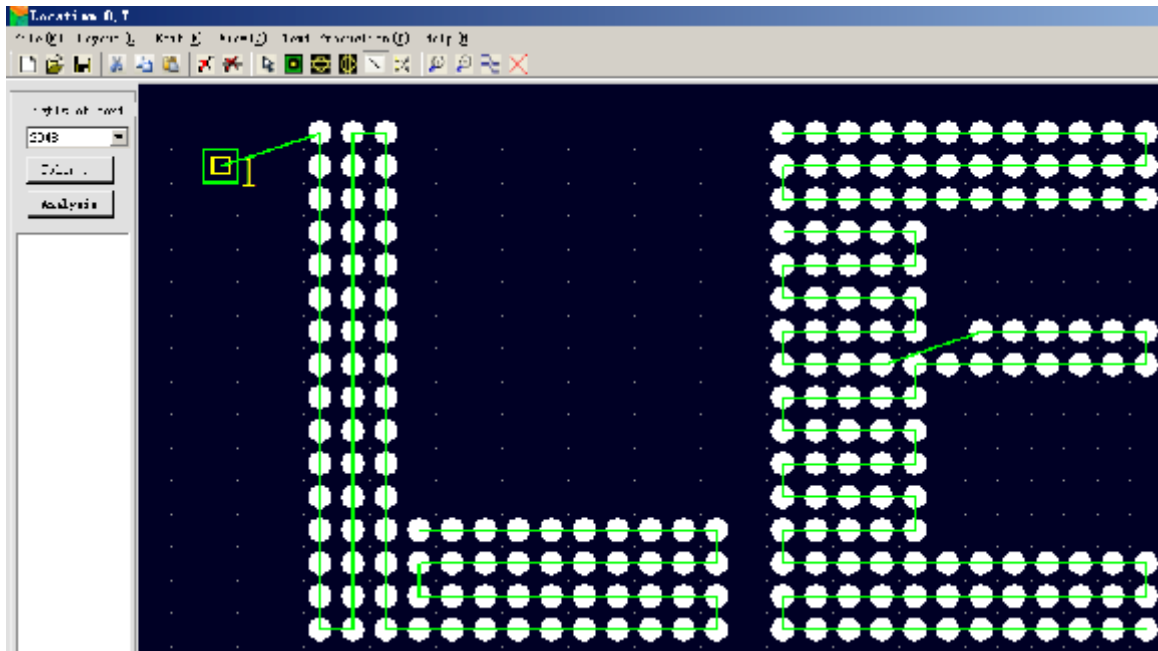
A. Auto layout (Project Config----Auto layout)



If the pixels layout is the rules shapes, you can choose auto layout. It is very convenient for you to layout the pixels. You can change the horizontal pixels quantity and vertical pixels quantity. You also can change the direction pattern, and the max quantity for each port output.



B. Manual layout. (Project Config----Start Manual layout)

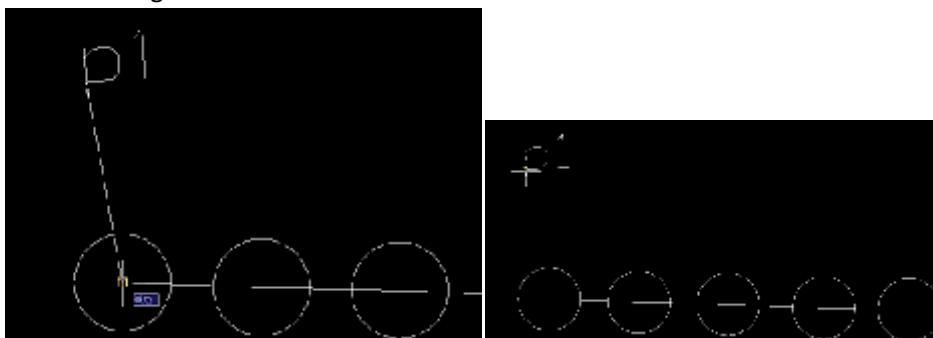


It is very convenient for you to layout some simple special shapes if you choose the manual layout. When you use the tool you will like it soon. First, click the circle and drag it from one point to another. You can layout all the shapes you want in the software. After you finished the layout, remember to add the port, and use the line to link port and the circle together, then save it. And import it to the software ledEdit.

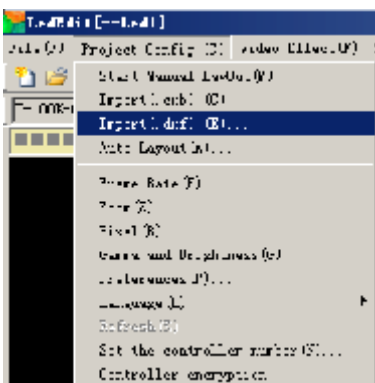
C. AutoCAD layout



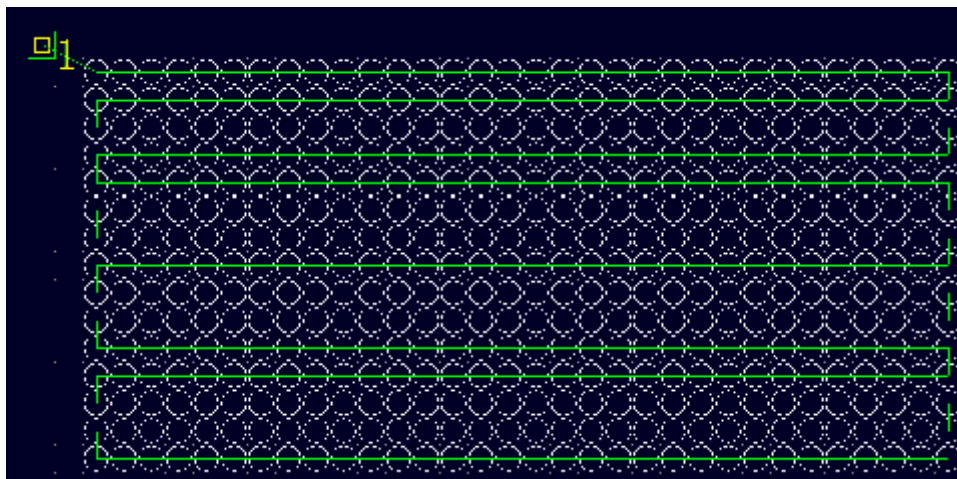
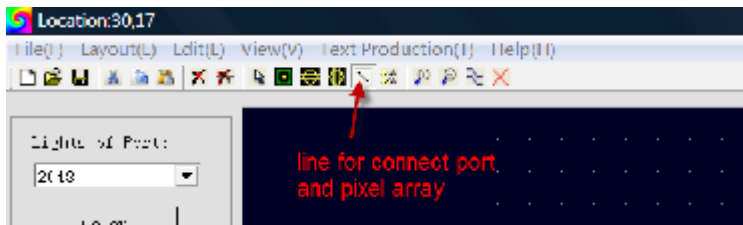
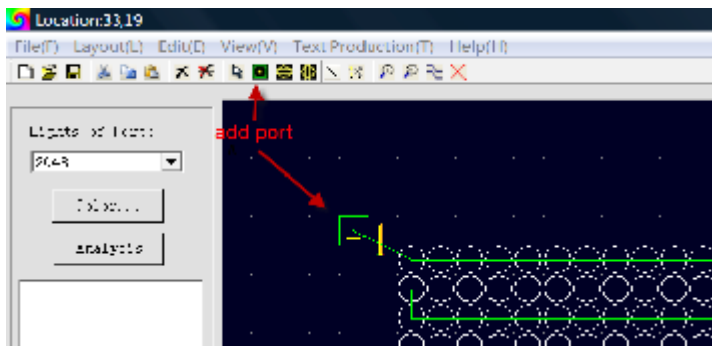
Just use the circle and line to layout, you must use the line to link the center of circle one to another. Use the single-line text input as the port mark, then use the line to link the insertion of the single-line text and the center of the circle together.



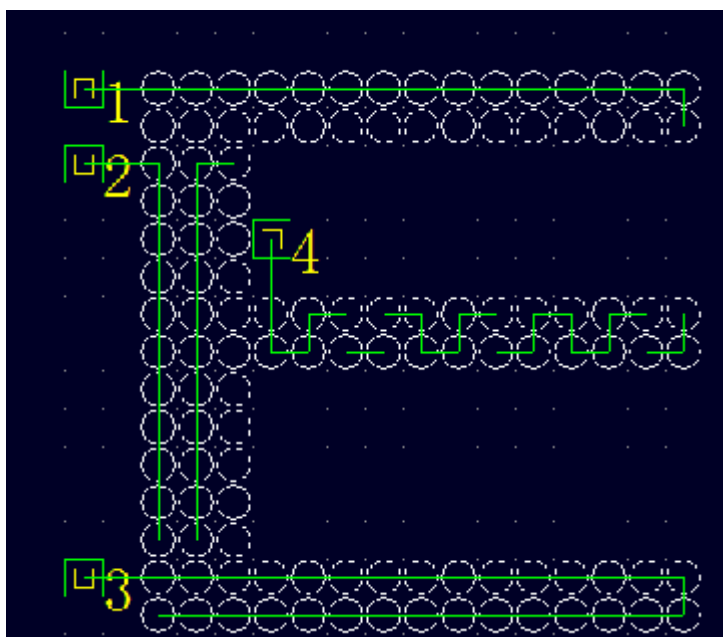
Save as the .dxf format. And then import it to the software (LedEdit).



For Single port (GECOSD1P-2048 controller)



For Four ports and Eight ports (GECOSD4P-4096 and GECOSD8P-8192)

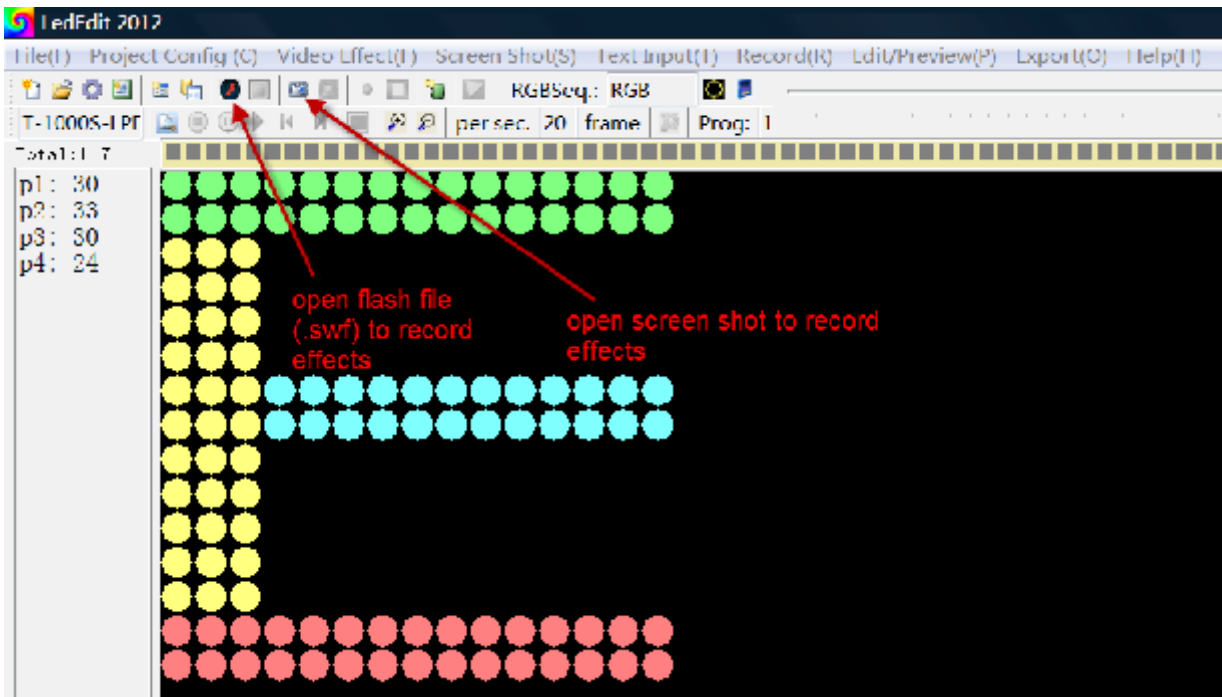


When you have finished layout, please save your layout (File----save), Then one .cxb file is created
And close the layout page.



3. Record the effect. (Project config---import .cxb file)

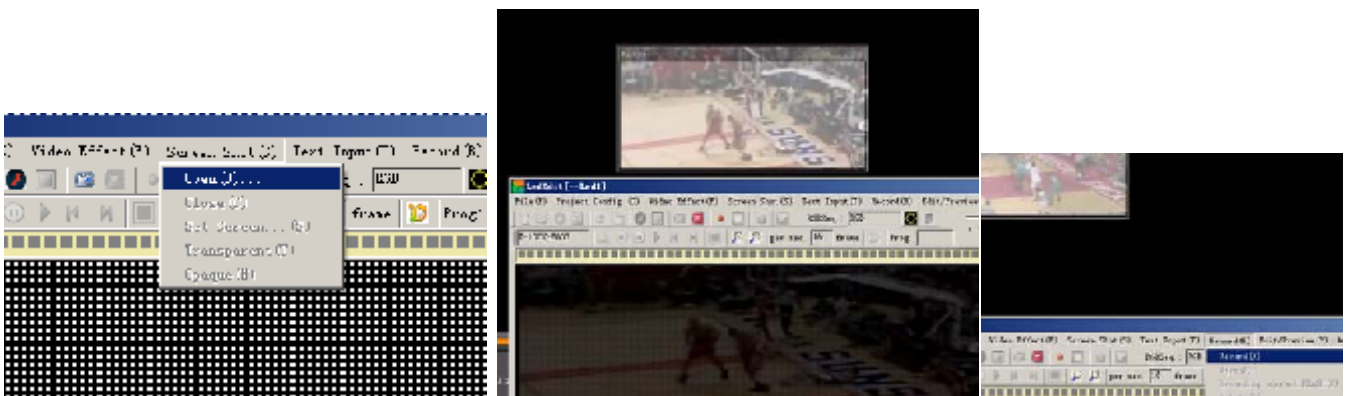




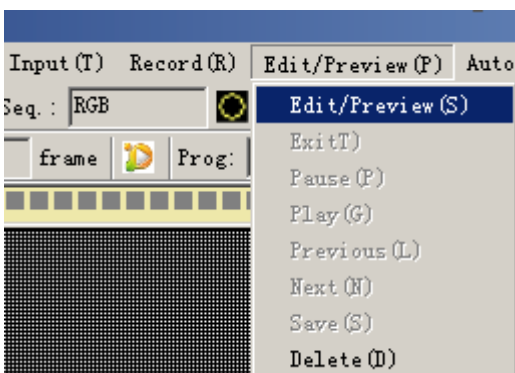
The software LedEdit2012 has several effects in the menu, but sometimes you must use the flash software to edit the animation to meet the customer's requirement. You can click the menu 'open video' or 'more effect' to play the flash animation on the software, then record it.

After you play the animation files in the software, you must click the menu 'record' to record the animation which you want to. You also can click the menu "Recording current FLASH" to record the whole flash files which you play on the software.

And sometimes can use the menu "Screen shot" to record the animation which you cannot edit in the flash software but can play on the computer, then record it.

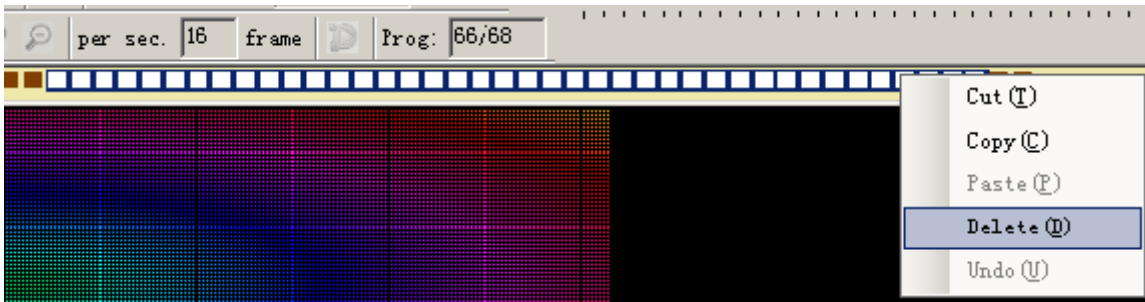


When you finish recording the animation, you can click the menu "Edit/preview" to preview the animation which you have recorded.



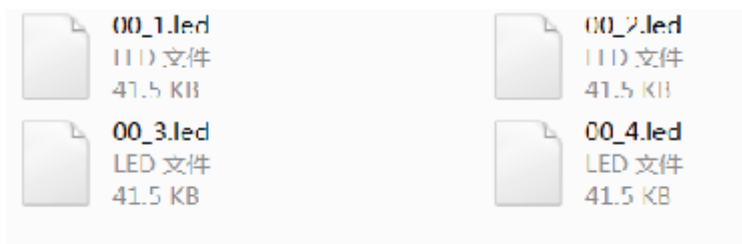
If there is some frames you don't like it. You can click the stop button , and select the frames which you

don't like then right-click and delete. After finish it, please save it.



4. Export the program.

After you finished all the step, next step is to export the program. Then copy the file to the SD card. So please click the Export Effect menu to export the program files(.led).



Note: Before you copy the program to the SD card, please format the SD card as the FAT format.

- Remember step1. Create a new project,
Step 2. Led pixels layout.
Step 3. Record the animation effect.
Step 4. Export the effect .led file.
Step 5. Format the SD card.
Step 6. Copy the program to the SD card.